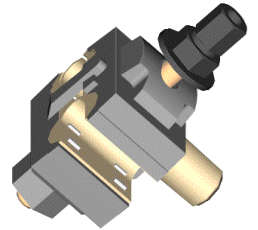


CDD 45 c Clemă derivație cu dinți pentru conductoare **coaxiale de Cu** /
*Insulation piercing connector for copper **coaxial** cables*

SIMBOLIZARE / SYMBOL

CDD - Clemă de **Derivație** cu **Dinți**
45 - curent nominal / *rated current* **45 A**
c - bransament cu cablu coaxial din **cupru** / *copper coaxial cable*



CARACTERISTICI TEHNICE / TECHNICAL DATA

Curent nominal / <i>Rated current</i> (A)	Secțiune conductor principal <i>Main conductor size</i> (mm ²)	Secțiune conductor derivat <i>Branch conductor size</i> (mm ²)	Greutate <i>Weight</i> (kg)	Ambalare (buc/cutie) <i>Packing</i> (pcs/box)
45	35÷95 Al izolat; 50/8 Al-OI izolat <i>35 ÷95 insulated Al; 50/8 insulated Al-OI</i>	6÷16 Cu izolat <i>6 ÷16 insulated Cu</i>	0,100	50