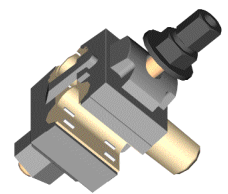


**CDD 90 c** Clemă derivație cu dinți pentru brașamente de putere (max. 90 A)  
*Insulation piercing connector up to 90 A*

**SIMBOLIZARE / SYMBOL**

- CDD** - Clemă de **Derivație** cu **Dinți** / *insulation piercing connector*  
**90** - curent nominal / *rated current 90 A*  
**c** - conductor coaxial de cupru / *copper coaxial cable*



**CARACTERISTICI TEHNICE / TECHNICAL DATA**

Curent nominal <i>Rated current</i> (A)	Secțiune conductor principal <i>Main conductor size</i> (mm <sup>2</sup> )	Secțiune conductor derivat <i>Branch conductor size</i> (mm <sup>2</sup> )	Greutate <i>Weight</i> (kg)	Ambalare (buc/cutie) <i>Packing</i> (pcs/box)
90	35÷95 Al izolat / <i>insulated Al</i> 50/8 Al-OI izolat / <i>insulated Al-OI</i>	16÷25 Cu izolat 16÷25 <i>insulated Cu</i>	0,110	50