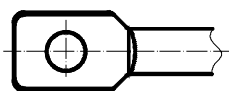
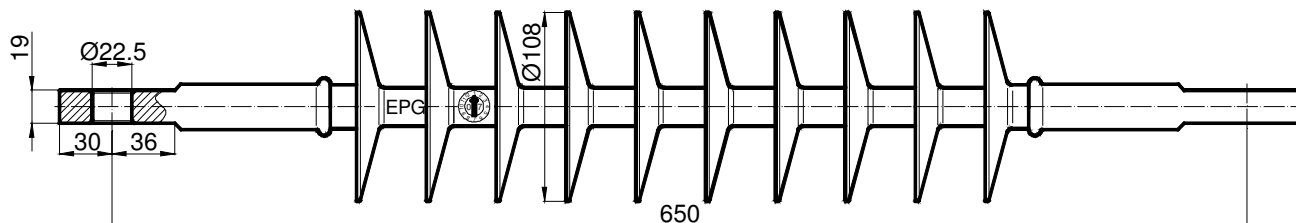


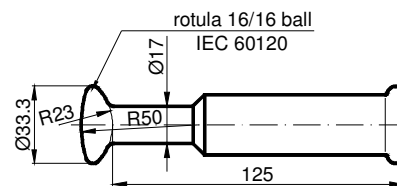
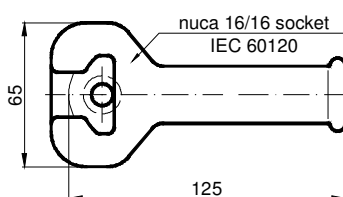
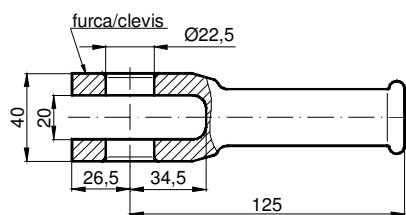
SIMBOLIZARE	: ITS-CF x-x
SYMBOL	:
ITS	- Izolator tip Tijă cu cauciuc Siliconic - <i>suspension composite insulator</i>
CF	- pentru linia de contact a Căii Ferate - <i>for railway overhead lines</i>
x	- tip armătură - <i>end-fitting type:</i> l - limba tongue; n - nuca socket r - rotula ball; f – furca clevis



limba / tongue

ITS-CF L-L

Poate fi echipat cu diferite tipuri de armături. / The insulator can be fitted with different types of end-fittings.



Caracteristica <i>Technical data</i>	U.M. <i>M.U.</i>	Valoarea <i>Value</i>
Tensiunea nominală <i>Rated voltage</i>	kV	25
Lungimea <i>Section length</i>	mm	650
Linia de fugă <i>Creepage distance</i>	mm	1206
Tensiunea de ținere la impuls de trăsnet (1,2/50 μs) <i>Dry lightning impulse withstand voltage (1,2/50 μs)</i>	kV	250
Tensiunea de ținere la frecvența industrială sub ploaie (1 min.) <i>Wet power-frequency withstand (1 min.)</i>	kV	120
Sarcina mecanică specificată (SMS) <i>Specified mechanical load (SML)</i>	kN	120
Sarcina mecanică individuală (SMI) <i>Routine test load (RTL)</i>	kN	60
Temperatura de exploatare <i>Ambient temperature</i>	°C	-40...+45
Masa <i>Weight</i>	kg	1,855
Durata de viață <i>Life time</i>	ani years	40